

singapore

home | concepts

live in inspiration

september 2008 | \$6.00

living
colour



Naoto Fukasawa & the Super Normal Body Painting goes Surreal Furniture that Light Up



**KOTARO NISHIBORI, 33,
HIYOSHIYA**

Tell us about Hiyoshiya

I'm the 5th generation head of Hiyoshiya, which has been around since the Edo period for more than 150 years. We are the last family in Kyoto that makes the traditional umbrella, *wagasa*, which is made from bamboo and Japanese *washi* paper. We are also one of the last 10 companies producing traditional umbrellas in Japan.

How did you introduce harmony to both traditional and modern design?

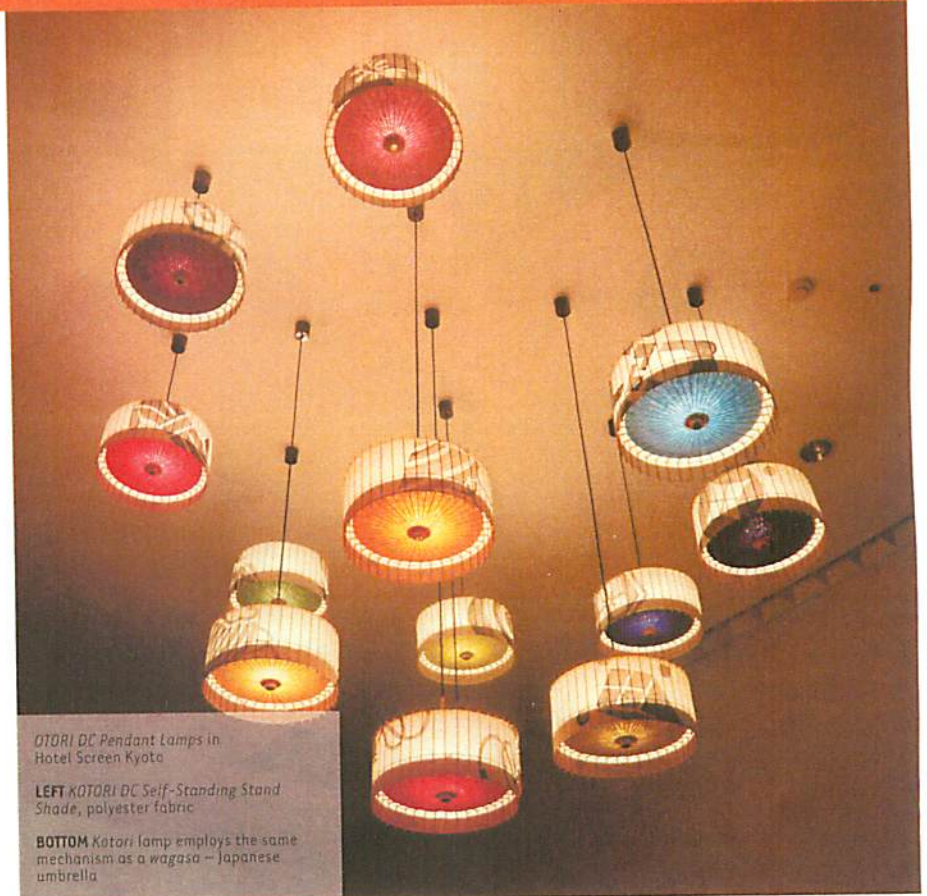
In 2006, I improvised and invented the *Kotori* lamp shade with my lighting designer, Mr Nagane.

What makes *Kotori* lamp shades unique?

I design the *Kotori* lamp shade using the same concept for making the traditional Japanese umbrella.

How did you get inspired?

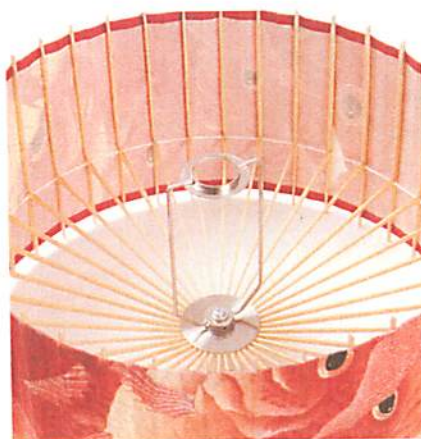
When I open the *wagasa* and hold it up to the sunlight, I can feel the warmth and brightness of the sunlight through the *washi* paper, and the geometric pattern of the bamboo bones complement its perfect beauty. Then I started to think that I might be able to use it for another product. And so, together with Mr Nagane, a famous Japanese lighting designer, we discovered the way to transform this traditional beauty into a lamp shade.



KOTORI DC Pendant Lamps in Hotel Screen Kyoto

LEFT *KOTORI DC* Self-Standing Stand Shade, polyester fabric

BOTTOM *Kotori* lamp employs the same mechanism as a *wagasa* – Japanese umbrella



How does it work?

It can be opened and closed like an umbrella. In this way, you can change the shade easily, thus transforming the look of your room. And it can also fold in and become so small that you can store it away easily. Of course, the light from the bulb through the *washi* paper is very soft. Therefore, the light through the geometric pattern of the bamboo bones appears very beautiful.

www.wagasa.com

